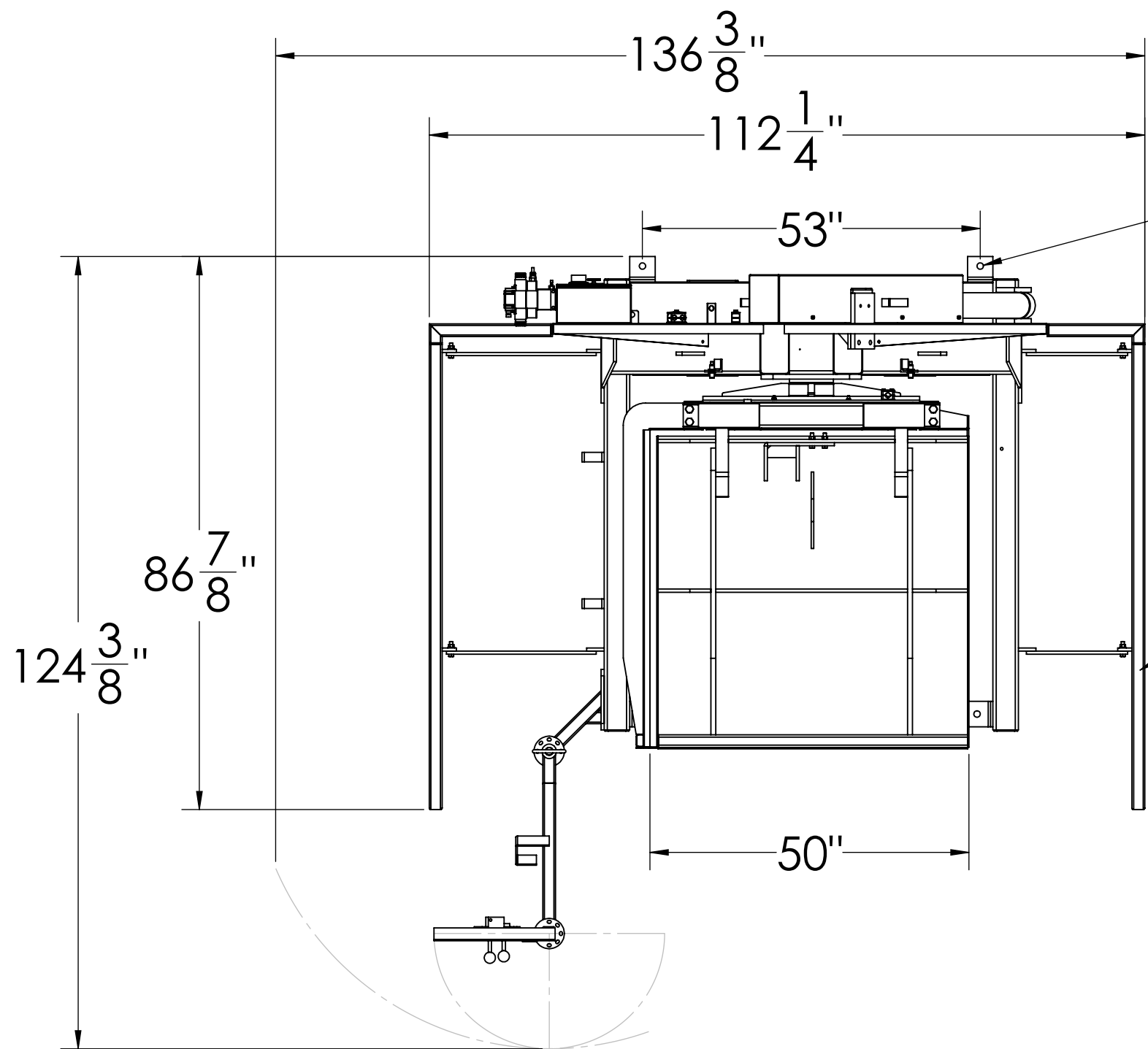
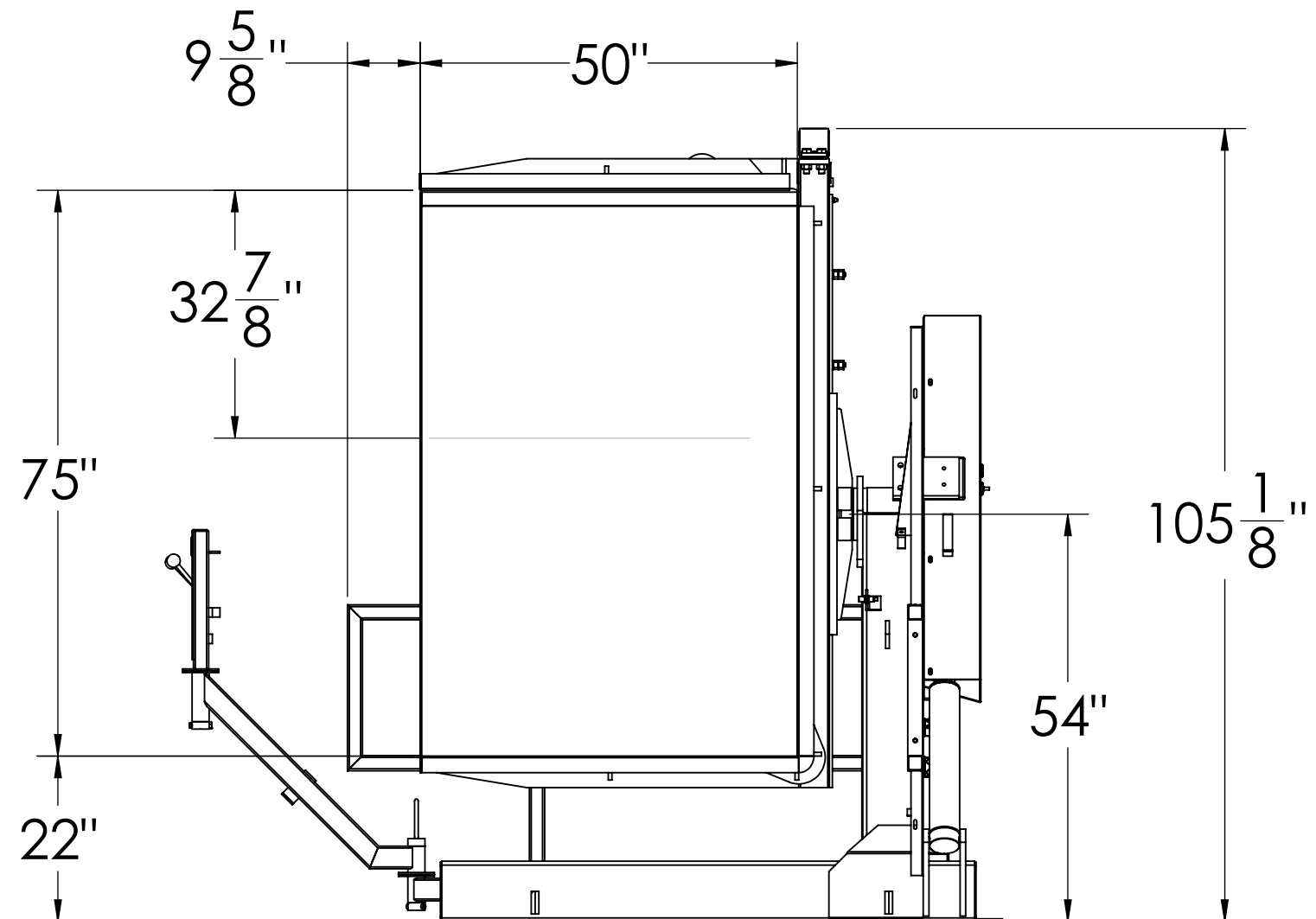
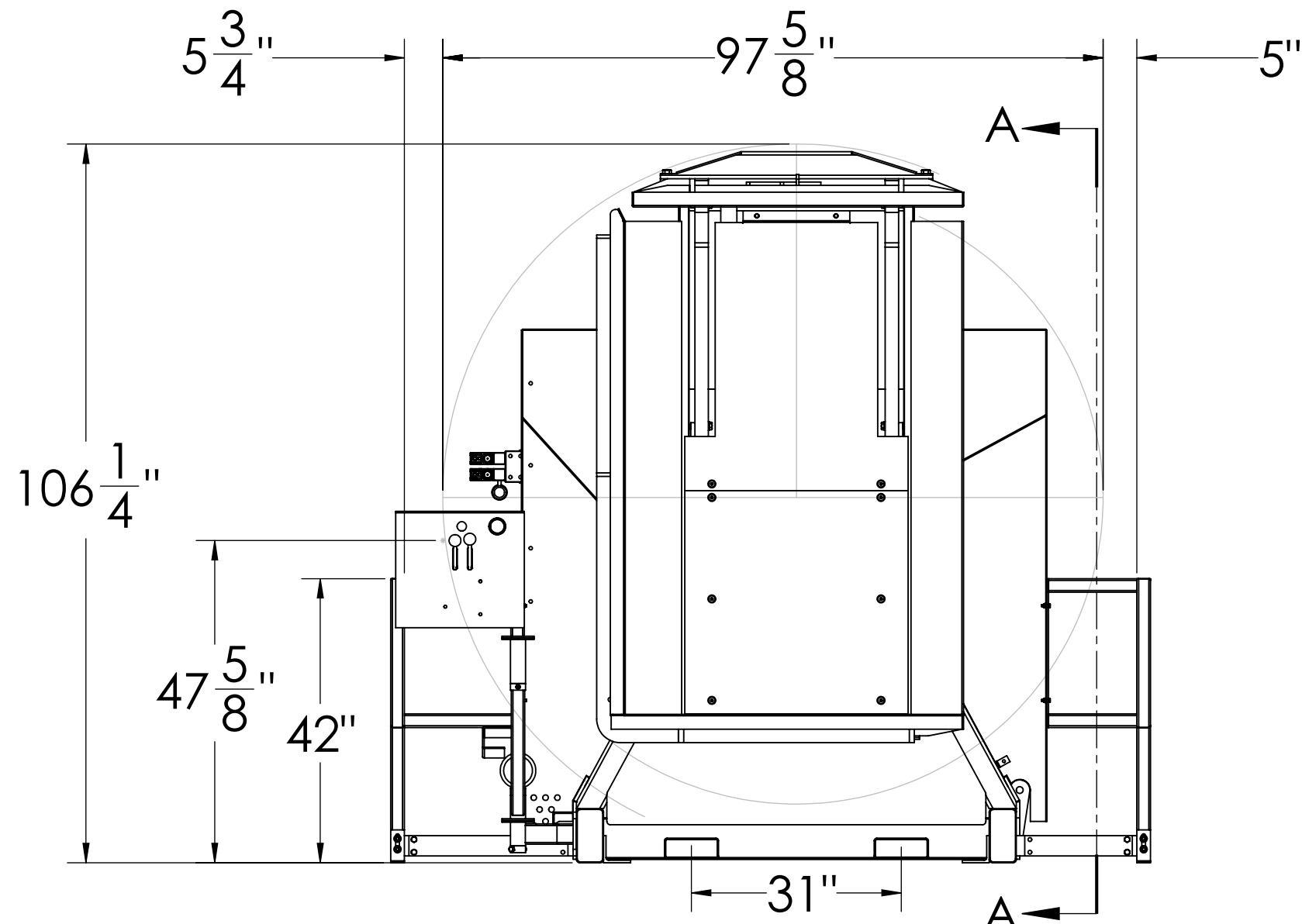
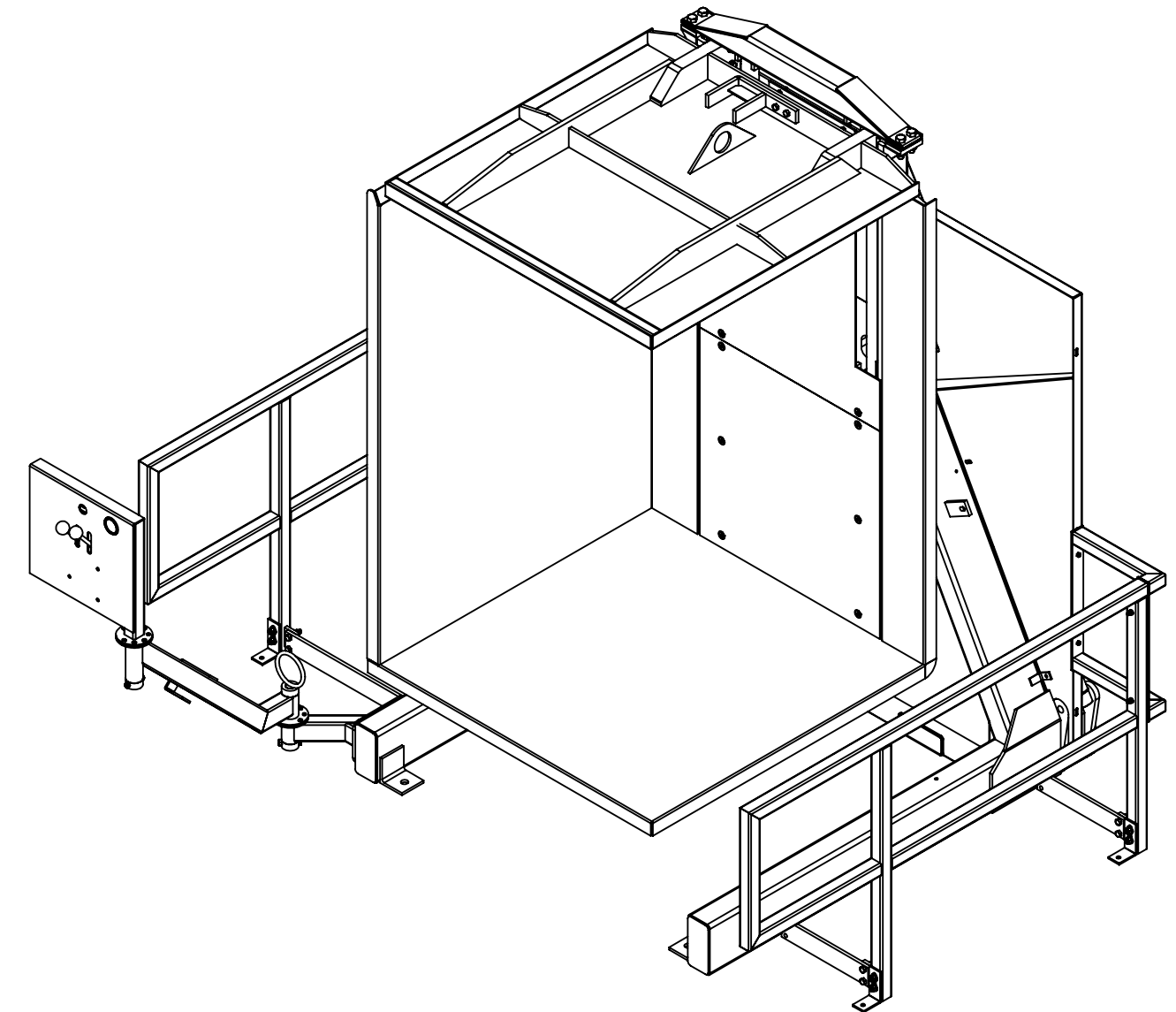


F
E
D
C
B
A



Ø 1" Hole for
Machine Anchor
(4 Places)

Ø 5/8" Hole for
Guarding Anchor
(4 Places)


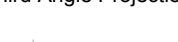


SECTION A-A
SCALE 1 : 22

Approval Print
Cherry's Industrial Equipment

Date Sent: _____

- ☐ APPROVED. PROCEED WITH FABRICATION
- ☐ APPROVED AS NOTED. PROCEED WITH FABRICATION. FURNISH REVISED PRINTS
- ☐ REVISE AS NOTED. RE-SUBMIT FOR APPROVAL. DO NOT FABRICATE.

Tolerances Unless Otherwise Specified			SC-75L Pallet Inverter Rail Guarding Option		Date:	08/30/2013
Decimals: 0.X = +/- 0.1		Angle: +/- 1			Scale:	DNS
0.XX = +/- 0.01		Fraction: +/- 1/4			Drawn By:	RJL
0.XXX = +/- 0.005					Checked By:	RJL
This drawing is confidential and is supplied on the express condition that it is not copied or communicated to other persons or companies			 600 Morse Ave. Elk Grove Village, IL 60007		Material:	PCS
Do not scale - If in doubt, ask					Weight:	3750 lbs. Aprx.
Please inform if modifications are made during manufacture					Drawing #:	SC-75L-GR_01a
Third Angle Projection			#	Date	By	
			Drawing Revisions			
All Units in Inches						

8

7

6

5

4

3

2

1

F

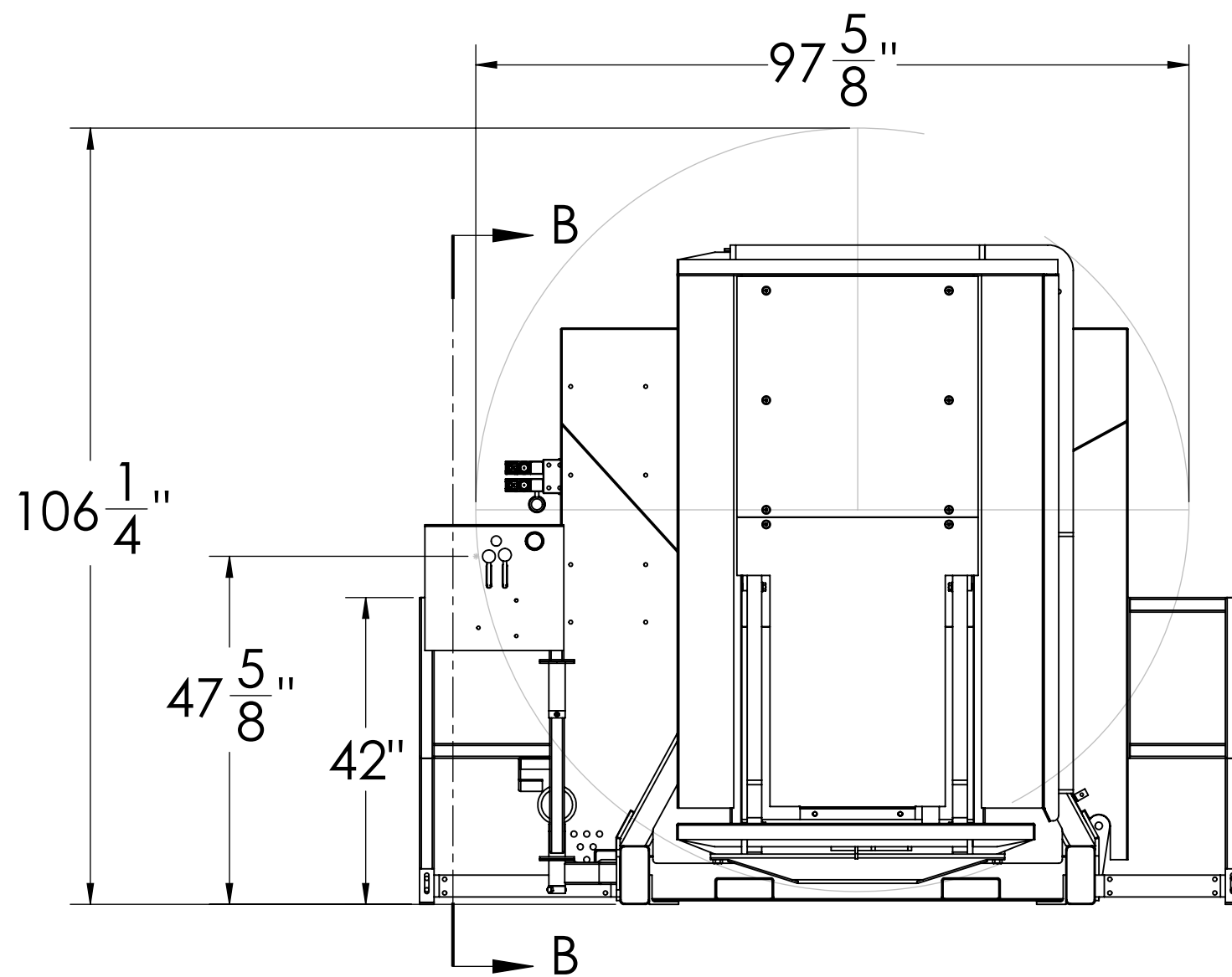
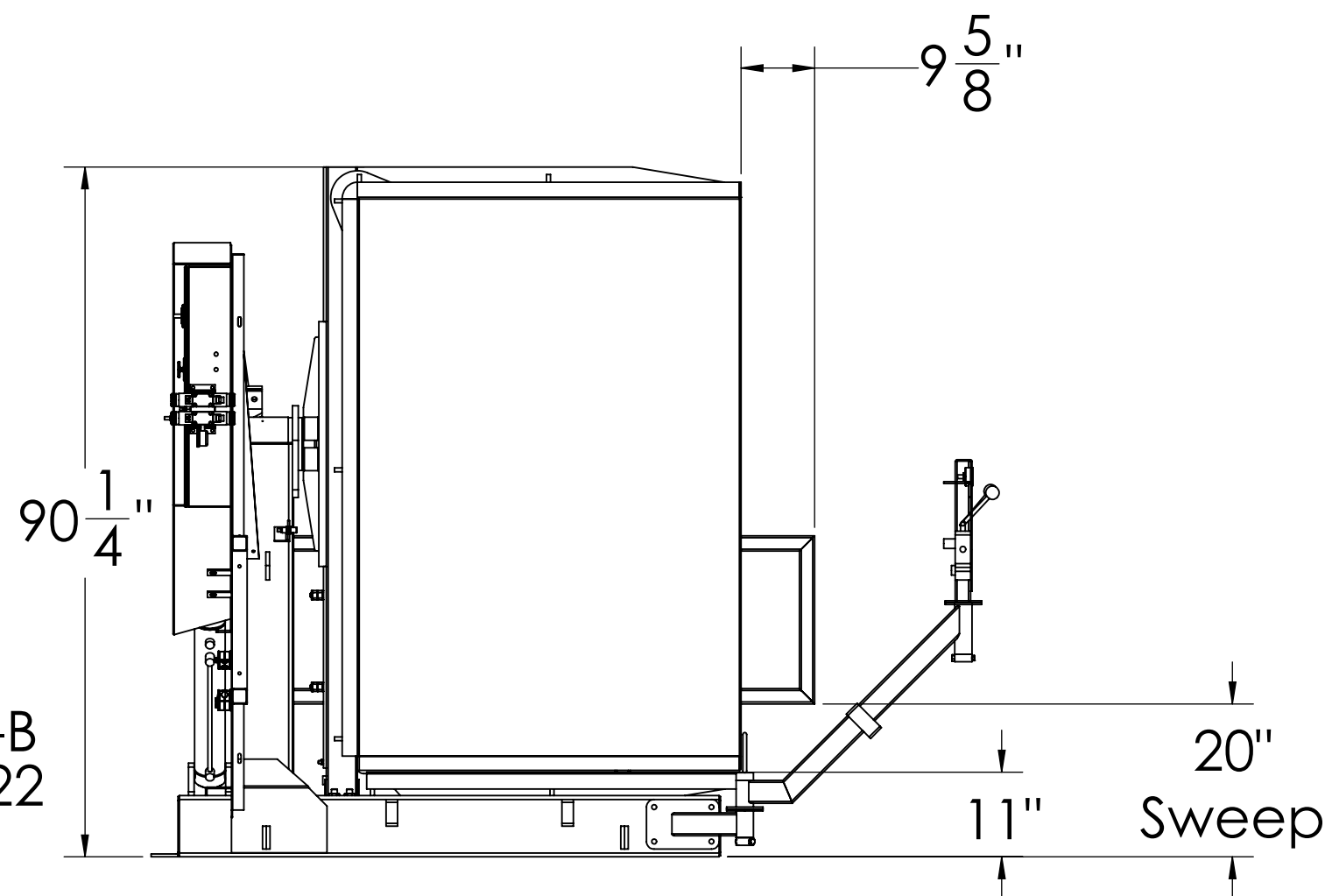
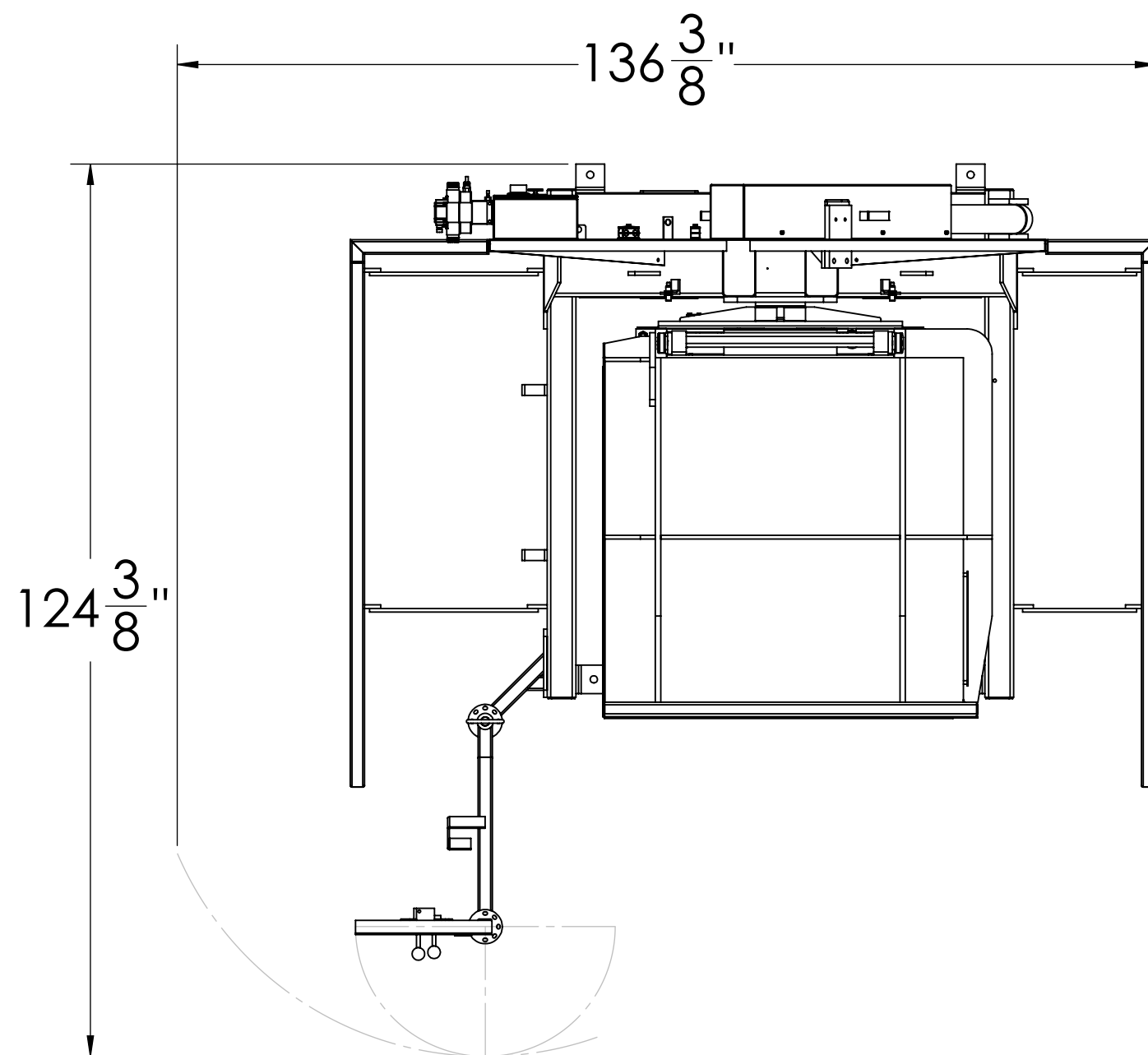
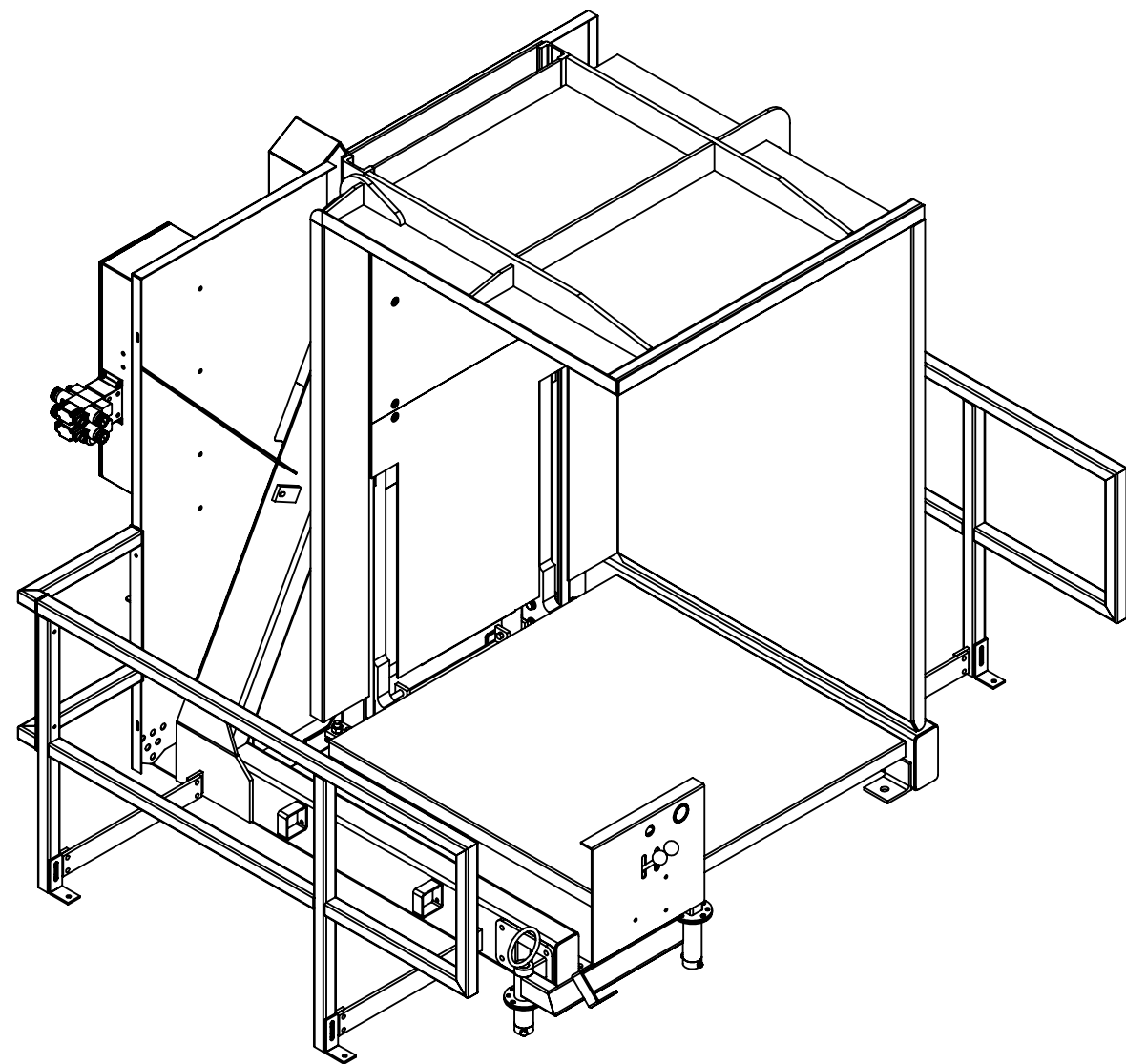
E

D

C

B

A



Approval Print
Cherry's Industrial Equipment

Date Sent: _____

- ☐ APPROVED. PROCEED WITH FABRICATION
- ☐ APPROVED AS NOTED. PROCEED WITH FABRICATION. FURNISH REVISED PRINTS
- ☐ REVISE AS NOTED. RE-SUBMIT FOR APPROVAL. DO NOT FABRICATE.

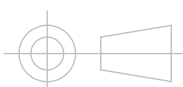
Tolerances Unless Otherwise Specified

Decimals: 0.X = +/- 0.1 Angle: +/- 1
 0.XX = +/- 0.01 Fraction: +/- 1/4
 0.XXX = +/- 0.005

This drawing is confidential and is supplied on the express condition that it is not copied or communicated to other persons or companies

Do not scale - If in doubt, ask
Please inform if modifications are made during manufacture

Third Angle Projection



All Units in Inches

#	Date	By
Drawing Revisions		

SC-75L Pallet Inverter
Rail Guarding Option



600 Morse Ave.
Elk Grove Village, IL 60007

Date:	08/30/2013
Scale:	DNS
Drawn By:	RJL
Checked By:	RJL
Material:	PCS
Weight:	3750 lbs. Aprx.
Drawing #:	SC-75L-GR_01a